



Convert Existing Projects User
Guide
IGSS Version 13.0

The information provided in this documentation contains general descriptions and/or technical characteristics of the performance of the products contained therein. The documentation is not intended as a substitute for and is not to be used for determining suitability or reliability of these products for specific user applications. It is the duty of any such user or integrator to perform the appropriate and complete risk analysis, evaluation and testing of the products with respect to the relevant specific application of use thereof.

Neither Schneider Electric nor any of its affiliates or subsidiaries shall be responsible or liable for misuse of the information contained herein, If you have any suggestions for improvements or amendments or have found errors in this publication, please notify us.

No part of this document may be reproduced in any form or by any means, electronic or mechanical, including photocopying, without express written permission of Schneider Electric.

All pertinent state, regional and local safety regulations must be observed when installing and using this product. For reasons of safety and to help ensure compliance with documented system data, only the manufacturer should perform repairs to components.

Failure to use Schneider Electric software or approved software with our hardware products may result in injury, harm or improper operating results.

Failure to observe this information can result in injury or equipment damage.

©2004, 2011 Schneider Electric, All rights reserved.

This document and attachments contain confidential information and is to be treated as Commercial-in-Confidence. Copying or disclosure to a third party is prohibited without prior consent in writing from Schneider Electric.

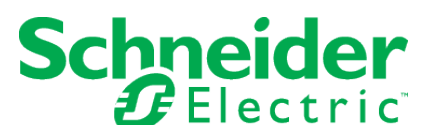


Table of Contents

Chapter 1: About Converting IGSS projects	5
1.1 Converting IGSS Projects	5
Important	5
Chapter 2: Converting from IGSS32 Versions 4 to 13	6
2.1 How to convert from version 4 to the newest version	6
Convert from IGSS version 4 to 11 to IGSS13.0	6
Dynamic graphs	7
Changing SQL/MSDE version	7
Layers Feature	7
IGSS Mobile App	8
Automatic Back up	8
See Also	8
2.2 How to convert VBA code from version 5/6	9
2.3 How to convert RMS reports from version 7/8	9
Chapter 3: Converting from IGSS32 Version 2 or 3	11
3.1 How to convert version 2 or 3 to version 4	11
3.2 Step 1 - Convert the v2 configuration (c2to3.exe)	11
3.3 Step 2 - Convert the v3 configuration (c3to4.exe)	14
3.4 Step 3 - Make the converted configuration active (Setup)	17
3.5 Step 4 - Convert driver settings from v2 to v4 (Driver Setup)	17
3.6 Step 5 - Install the converted configuration (Definition)	21
3.7 Step 6 - Start the converted configuration	22
Chapter 4: Converting from IGSS16 Version 8	24
4.1 How to convert IGSS16 version 8.x to IGSS32 version 2	24

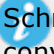
4.2 How to convert version 8.x report format files	26
4.3 How to convert version 8.x base class files	27
4.4 How to convert version 8.x maintenance jobs	27
Chapter 5: Converting from Older Versions	29
5.1 How to convert configurations older than version 8.x	29
5.2 How to convert from version 7 to 8	29
5.3 How to convert from IGSS version 6 to 7	30
5.4 How to convert from version 4.4.5 to 6.5.0	30
Chapter 6: Reference and Lookup	33
6.1 Getting Help in IGSS	33
6.2 Conventions in this Manual	34
6.3 Version Information (IGSS Help System)	35
Chapter 7: Glossary	36

Chapter 1: About Converting IGSS projects

1.1 Converting IGSS Projects

When you are upgrading from an earlier version of IGSS, there are a few things you have to do before you can start using your older projects in the newest version.

Most importantly, the format of the old projects must be converted to the newest version. As a rule, you will convert an existing project one version at a time.

 Schneider Electric always recommends that you take a backup of your existing version before you convert up to a newer version.

Important

The IGSS Support Team can analyze the project for any potential conflicts as well as clean the project to reduce upgrade errors and optimize upgrade performance. This service is available to all customers with a Support-and-Upgrade subscription and is limited to upgrades from IGSS version 6 and later.

Please be advised that pricing and scope of this service is subject to change and you should contact IGSS for details regarding pricing and a time estimate for the project analysis and cleaning prior to upgrading your project.

If you intend to take advantage of this service, it is recommended you contact the IGSS Support Team in good time before an upgrade is expected to be deployed on the live installation. For complex and/or larger projects, you should expect a longer processing time, depending on the size, complexity and age of the project to be analyzed.

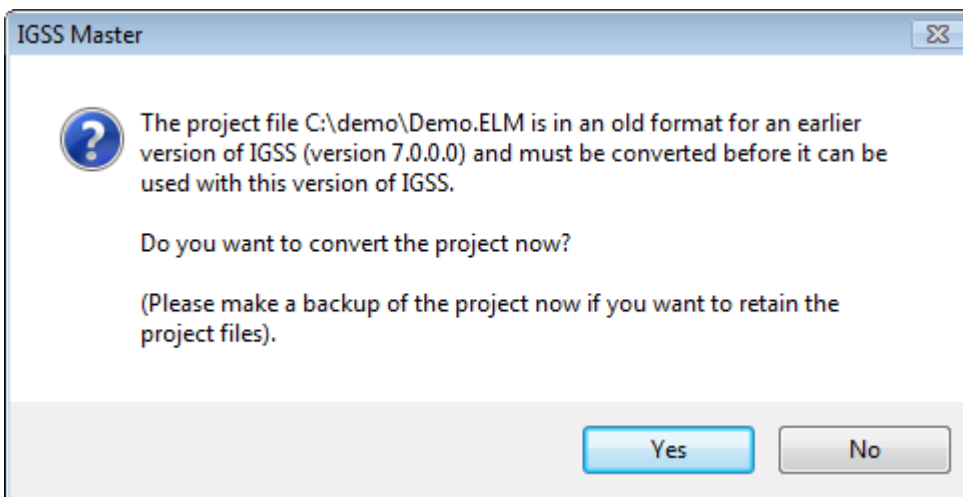
Chapter 2: Converting from IGSS32 Versions 4 to 13

2.1 How to convert from version 4 to the newest version

These procedures will show you how to convert your IGSS project from versions 4 to 10 to IGSS 13.0

Convert from IGSS version 4 to 11 to IGSS13.0

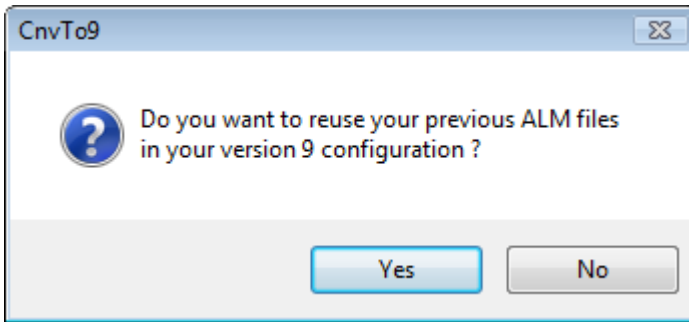
1. Open the IGSS Master.
If you are in **Runtime** mode, click the **Application Menu** drop down and select **Design** mode.
2. Select the **Design and Setup** tab and click the **Open Project** button.
3. In the browser window, select the project file (.elm) that you wish to convert to IGSS 13.0 and click **Open**. The following message is displayed:



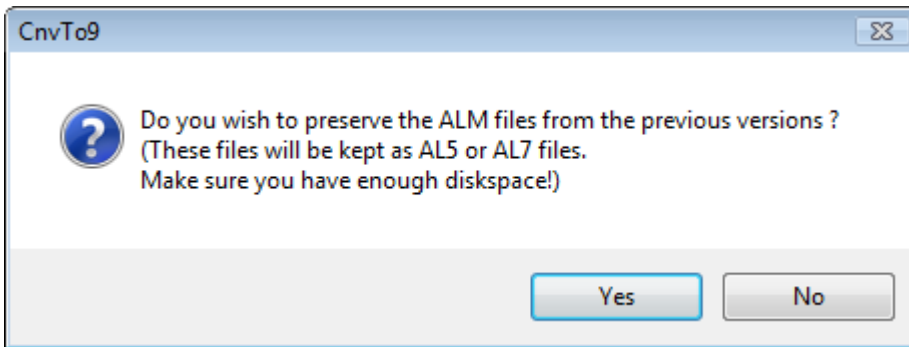
4. Click **Yes** to start the conversion.
5. Click **Yes** if you want to reuse your previous ALM files in the new version 11. You will be prompted for a destination to the **report folder**, where the converted ALM files will be created.

This step may be postponed. If so, you can later manually convert alarm files by running the **CnvTo10.exe** program and opening the alarm files from the **File** menu. You should then remember to convert both the online alarms in the configuration folder and the alarm history in the report folder.

If files are not converted, these files will be discarded when the IGSS Data Collector starts.



6. Click **Yes** if you want to keep a copy of your existing ALM files.



7. If the conversion is successful, an information box will be displayed and the new project is automatically opened. You will be prompted to install the project but you may postpone until you want to run the converted project in the **Supervise** module.

Dynamic graphs

User-created Dynamic graphs are converted automatically when you upgrade your IGSS installation.

Changing SQL/MSDE version

If you are storing **HDM**, **LOG** and/or maintenance data in MSDE or a full SQL Server, it is recommended that you continue to use these versions of MSDE/SQL and avoid installing the SQL Server 2005 Express. IGSS will still work with the existing data.

If you anyway want to change to SQL server 2005, you should refer to the Microsoft user documentation.

Layers Feature

All converted descriptors will automatically be added to the default **descriptor**¹ layer.

¹A descriptor is the graphical display of an object. IGSS includes many types of descriptors including: - Built-in standard symbols - Animated symbols (Symbol Factory library) - Graphics and animation - Drawing symbols - Windows controls - ActiveX controls An IGSS object can be represented with different descriptors on different diagrams.

IGSS Mobile App

The mobile application for IGSS was introduced in IGSS version 11. When converting a project to IGSS 13.0, all Areas and Diagrams that are displayed in the menu¹ will automatically be set to be displayed in the IGSS Mobile App. Areas and Diagrams that are not displayed in the menu must manually be set to be displayed in the IGSS Mobile App after the conversion process.

All objects in Areas and Diagrams that are displayed in the menu will also be displayed in the IGSS Mobile App. Any other objects can be manually configured after the conversion to be displayed in the IGSS Mobile App.

All alarm filters will be automatically be selected to be displayed in the IGSS Mobile App.

¹An Area or Diagram with the **Name to menu** check box selected in the Area or Diagram properties.

Automatic Back up

The original project to be converted will be copied to the **Backup** folder of the current IGSS installation prior to the conversion.

The folder used to contain the copy of the original project will be named using the following naming convention YYYY-MM-DD HH-mm, where

- YYYY is the year
- MM is the Month
- DD is the Day
- HH is the hour
- mm is the minute

The backup folder of a project is converted on the 6th June, 2016 at 14:35 will therefore be named: 2016-06-06 14-35.

Although the IGSS system copies the configuration prior to converting, it is still advisable to make your own separate backup of the configuration, including all support files and data files prior to converting.

See Also

"How to convert VBA code from version 5/6" on page 9

How to manually convert Dynamic Graphs

2.2 How to convert VBA code from version 5/6

If you are using VBA and want to convert the VBA code from IGSS version 5 or 6 to IGSS 13.0, do the following to convert your VBA code:

1. If your VBA code is password protected, remove the protection in the existing version and save the configuration. Protection may be reapplied once the configuration has been converted.
2. Run the **CnvTo10.exe** program as described in the procedure, "How to convert from version 4 to the newest version" on page 6
3. After converting your configuration, open the **Definition** module.
4. If your VBA code has references to non-IGSS components, these references may need to be reestablished in the VBA editor menu **Tools/References**.
5. Save your configuration - even if you have not made any changes.

2.3 How to convert RMS reports from version 7/8

This procedure will explain how to convert existing RMS reports into a version 10 report format.

1. Open the existing RMS report .xls file in Excel.

If IGSS version 8 is installed on the computer, the RMS version 8 will start as normal

If IGSS version 8 is not installed on the computer an error message will be displayed saying that RMS.dll does not exist.

2. Click the **Office button** (donut), select **Prepare** and select **Properties**.
3. Under **Document Properties**, select **Advanced Properties**.
4. Click the **Custom** tab.
5. Remove the three properties:
 - Solution ID
 - _AssemblyName
 - _AssemblyLocation

Not all properties will necessarily exist.

6. Save the file as an .xlsx file
7. At the Windows command prompt, navigate to the \gss folder and run the following command:

RMScmd.exe DB -REGISTER FILE= <file path + file name>

For example: RMScmd DB -REGISTER FILE=C:\myRMSfile.xlsx

8. Open the **Master** module and create a new report. In **Template name**, use the same name as the existing RMS report.
9. Click **Check Out**, to create a copy of the template in your working folder.
10. From Windows, overwrite the report in the working folder, with the converted RMS report.
11. Click **Check In**.
12. Click **Edit**, to open the report.
13. In the **Document Actions** window, select **Options** and click **Select sheets to output**.
14. Select the appropriate sheets, click **OK** and save the document.

You have now successfully converted the RMS report.

Chapter 3: Converting from IGSS32 Version 2 or 3

3.1 How to convert version 2 or 3 to version 4

This topic describes the procedure necessary for converting version 2 or 3 configurations into version 4.

We strongly recommend that you follow the procedural steps in the exact order listed below.

The following procedure is divided into six main steps corresponding to the various IGSS programs you must use to convert the version 2 or 3 configuration.

[STEP 1: Convert the v2 configuration \(**c2to3.exe**\)](#)

[STEP 2: Convert the v3 configuration \(**c3to4.exe**\)](#)

[STEP 3: Make the converted configuration active \(**Setup**\)](#)

[STEP 4: Convert driver settings from v2 to v4 \(**Driver Setup**\)](#)

[STEP 5: Install the converted configuration \(**Definition**\)](#)

[STEP 6: Start the converted configuration \(\)](#)


The last step is only necessary if the version 2 or 3 configuration was using the **Winpager** program.

[STEP 7 \(**Winpager** only\): Convert settings to IGSS version 6.0 format \(.xml file\)](#)

3.2 Step 1 - Convert the v2 configuration (c2to3.exe)

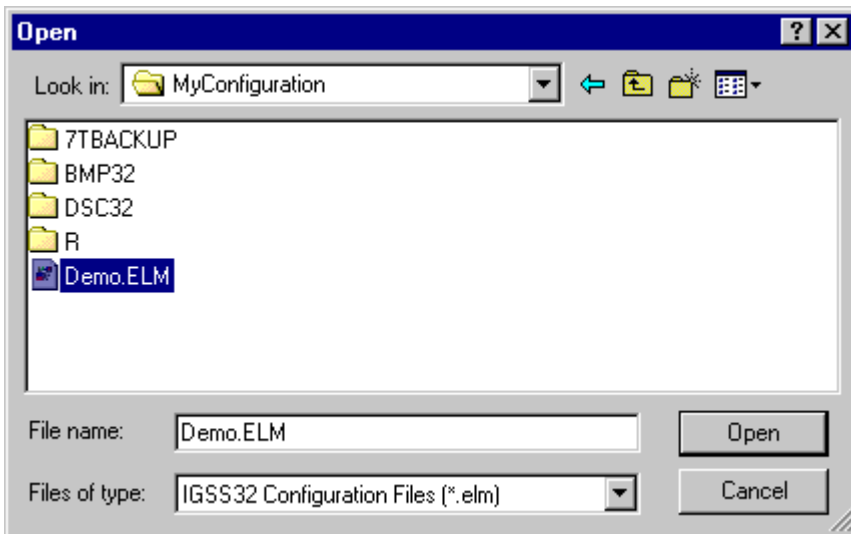
If you are converting from version 3, please skip this step and continue directly to "Step 2 - Convert the v3 configuration (c3to4.exe)" on page 14.

If you are converting from version 2, please continue with this procedure.

 We recommend that you backup the v2 configuration before converting it to v4. If you're running Windows NT, both IGSS 2.0 and IGSS 4.0 can be installed and run on the same machine. If you're running Windows 2000 or XP, only IGSS 4.0 can be installed. In that case, you will have to export the IGSS 2.0 configuration and driver settings.

1. Find the **c2to3.exe** program in the **\gss** sub-folder of the IGSS installation and double-click on it to open the program window.

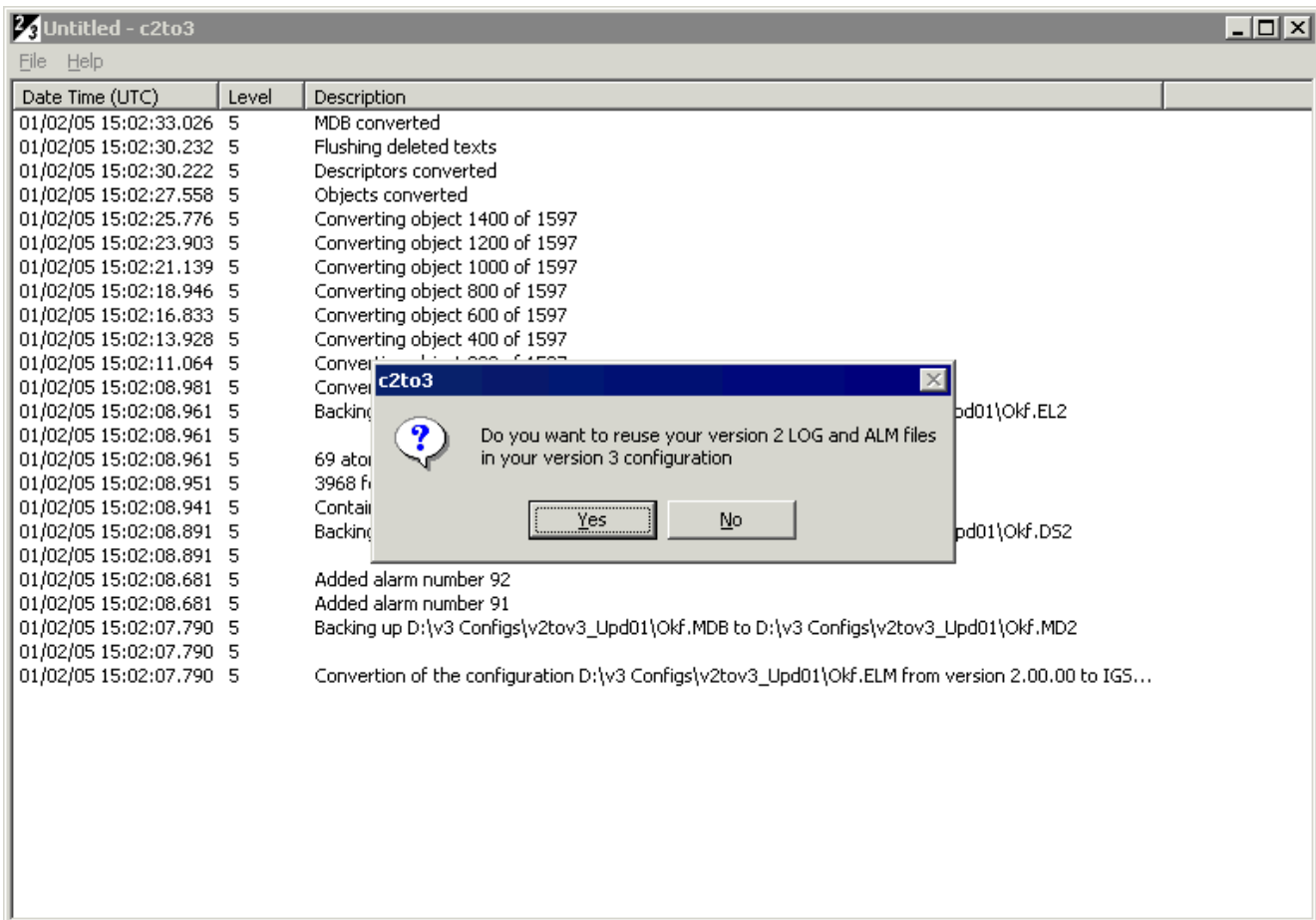
2. Select **File** → **Open** and select the v2 configuration file (<MyConfig>.elm) you want to convert.



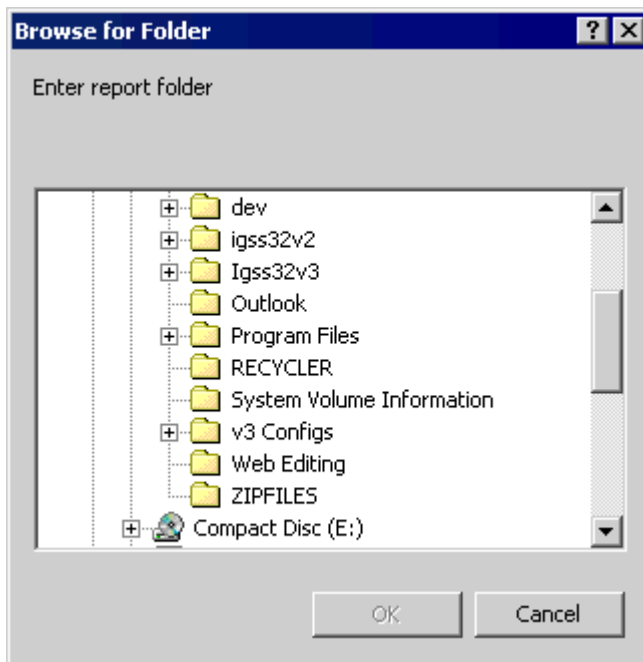
3. Click **Open**. The v2 configuration is now converted to the v3 format. A message appears informing you that the v2 driver configuration must be converted separately. This is described later in this procedure. Click **OK**.
 - The program window shows you a detailed status of the conversion. Notice that the three core files of the v2 configuration are backed up: <MyConfig>.elm, <MyConfig>.dsc and <MyConfig>.mdb.

The status information displayed below is saved in the file, c2to3.log, located in the current folder.

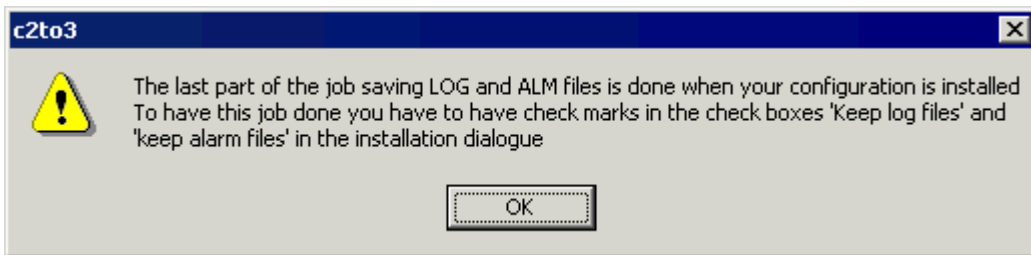
Towards the end of the conversion process, you are asked whether you want to reuse the alarm and log files from v2.



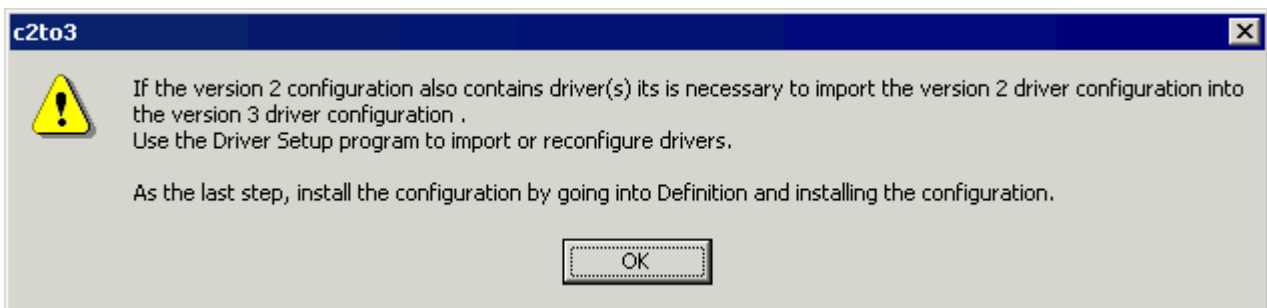
4. Click **Yes** to reuse your v2 alarm and log files. The **Browse for Folder** dialogue appears.



- Select the **report folder** where the v2 alarm and log files are located and click **OK**.
A message appears telling you how to integrate the above files when you install the converted configuration in version 3.




- Click **OK**. A message appears telling you that you need to convert your v2 driver settings.



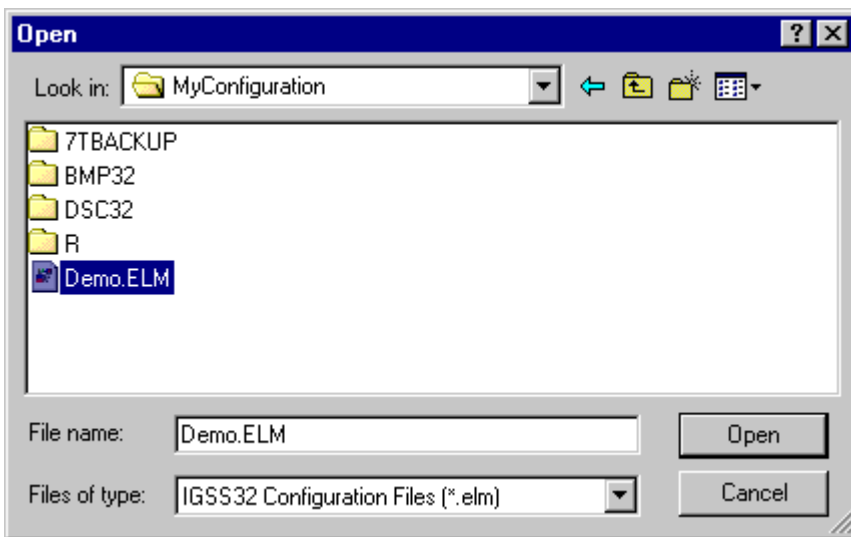
- Click **OK** and close the **c2to3.exe** program.

Next >

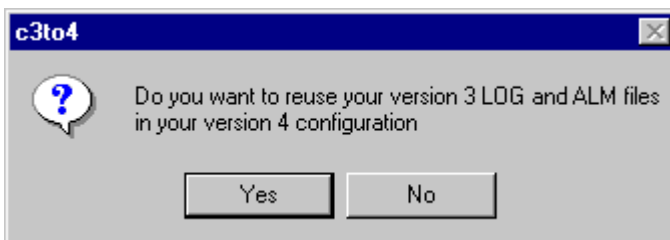
3.3 Step 2 - Convert the v3 configuration (c3to4.exe)

 We recommend that you back up the v3.0 configuration before converting it to v4.0. Make sure that all configuration files are writable (remove the Read Only attribute, if necessary), before you carry out this procedure.

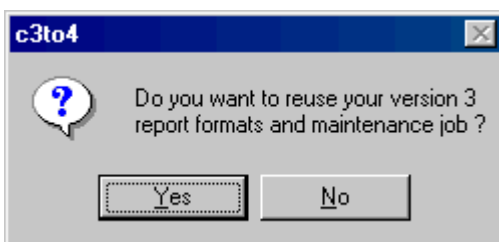
- Open Windows Explorer and double-click the **c3to4.exe** program located in the **\Gss** subfolder of the installation path. The program window appears.
- Select **File**→ **Open** and select the v3.0 configuration file (<MyConfig>.elm) that you want to convert.



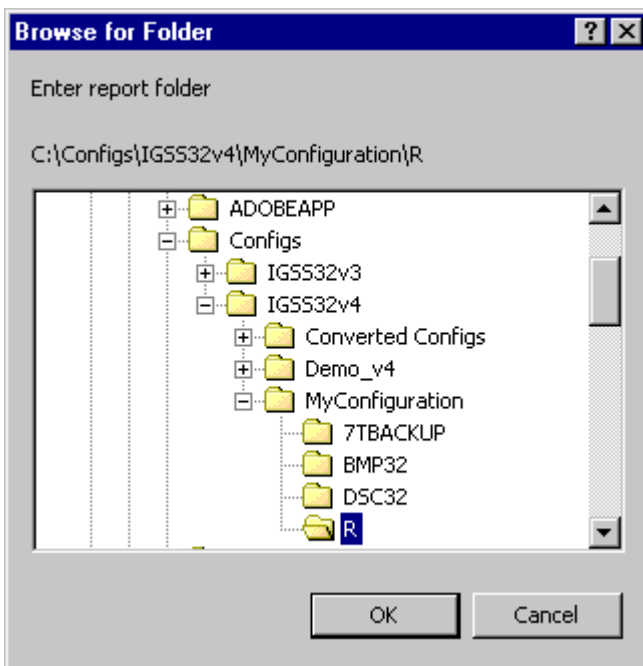
3. Click **Open**. The v3.0 configuration is now converted to the new v4.0 format.
 - The program window shows you a detailed status of the conversion. Notice that the three core files of the v3.0 configuration are backed up as <MyConfig>.el3, <MyConfig>.ds3 and <MyConfig>.md3. If the conversion fails for some reason, you can roll back by renaming these files back to their original names.
4. Towards the end of the conversion process, you are asked whether you want to reuse the alarm and log files from v3.0.



5. Click **Yes** to reuse the v3.0 alarm and log files. A new message appears asking you whether you want to convert your v3.0 report formats and maintenance jobs.



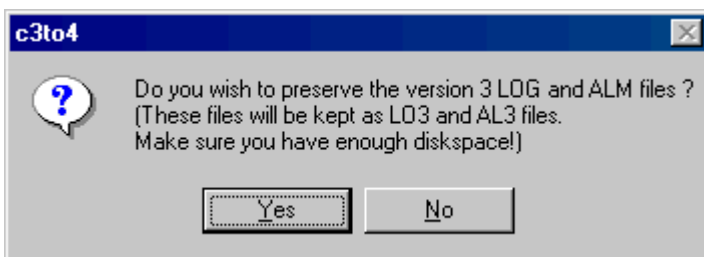
6. Click **Yes** to convert the report formats and maintenance jobs. The **Browse for Folder** dialogue appears.



7. Select the **report folder** for the converted configuration and click **OK**

- The report formats functionality has been moved into the **Definition** program in v4.0. This means that all information about report formats is now saved in the configuration database, <MyConfig>.mdb.
The report format related databases from v3.0: <MyReportFormat>.mdb, Rformat.mdb and Rstatus.mdb in the report folder are thus obsolete in v4.0.

8. A message appears asking you whether you want to preserve the old v3.0 .log and .alm files. Do one of the following:



- Click **Yes** to preserve the files in the report folder. The v3.0 files will be renamed to .lo3 and .al3.
 - Click **No** to delete the v3.0 .log and .alm files from the report folder.
9. When the conversion process is completed, close the **c3to4.exe** program.
10. Click the **Next** button to continue with STEP 2 of the conversion procedure.

If you have used manual report objects in the configuration, we recommend that you review the report formats containing those objects. The conversion program imports all objects from the database containing hourly, daily and monthly values, Genhdm.mdb. Objects that are not found in the

configuration itself are marked as manual report objects. However, they may be objects that have been removed from the configuration and thus have no relevance any longer in the reports.

The status information displayed below is saved in the file, c3to4.log, located in the current folder.

Next >

3.4 Step 3 - Make the converted configuration active (Setup)

1. Open the **Setup** program.
2. On the **Folders** tab, do the following:
 - Under **Configuration file**, type the path to the converted configuration file, <MyConfig>.elm or click **Browse** to find it.
 - Under **Report folder**, type the path to the configuration's **report folder** or click **Browse** to find it.
 - Under **Symbol file**, type the path to the configuration's symbol file or click **Browse** to find it.
3. Click **OK** to close the program.

Next >

3.5 Step 4 - Convert driver settings from v2 to v4 (Driver Setup)

If you are converting from version 3, please skip this step and continue to "Step 5 - Install the converted configuration (Definition)" on page 21.

If you are converting from version 2, please continue with this procedure.

In v2, driver settings were stored in the Windows Registry. Therefore, these settings must first be exported from the Registry to a v4 file format. Then they are imported into a v4 driver profile whose settings are now saved in the configuration's database, <MyConfig>.mdb.

1. Open the v2 **Driver Setup** program and verify that the v2 driver profile associated with the converted v2 configuration **is** set active.

This step is necessary, because the v4 **Driver Setup** program exports the active driver profile from v2. If you need to copy the v2 driver profile to another PC, refer to the help file for v2 **Driver Setup**. Search for "managing driver profiles". The procedure is described towards the end of the topic.

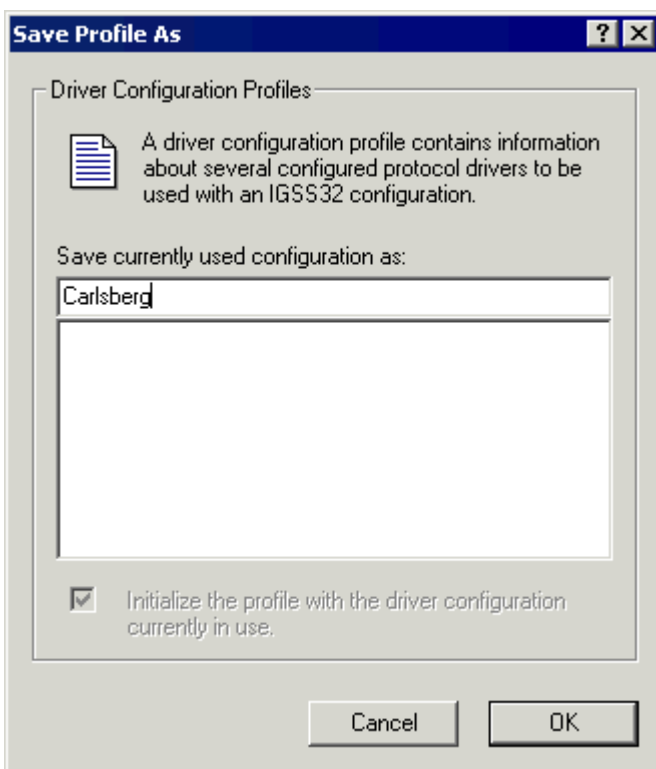
2. Open the v4 **Driver Setup** program.

At this point, there is no driver profile associated with the converted configuration. Therefore,

this message appears.

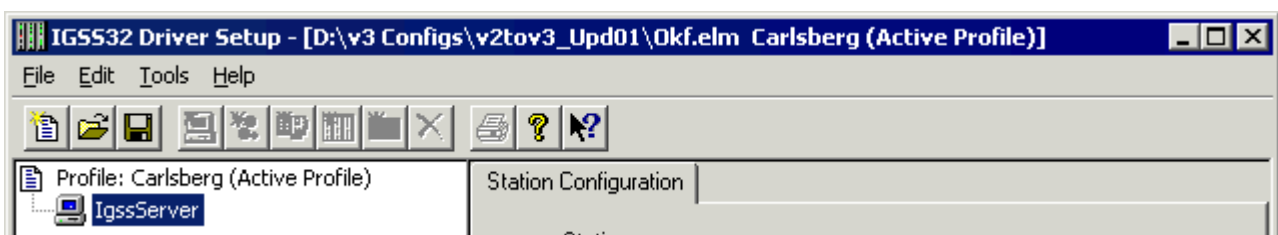


3. Click **OK**. The **Save Profile As** dialogue appears.



4. Type the name of the new v4 driver profile. Typically, this will be the same name as you gave the configuration. Click **OK**. By default, the new driver profile is set active.

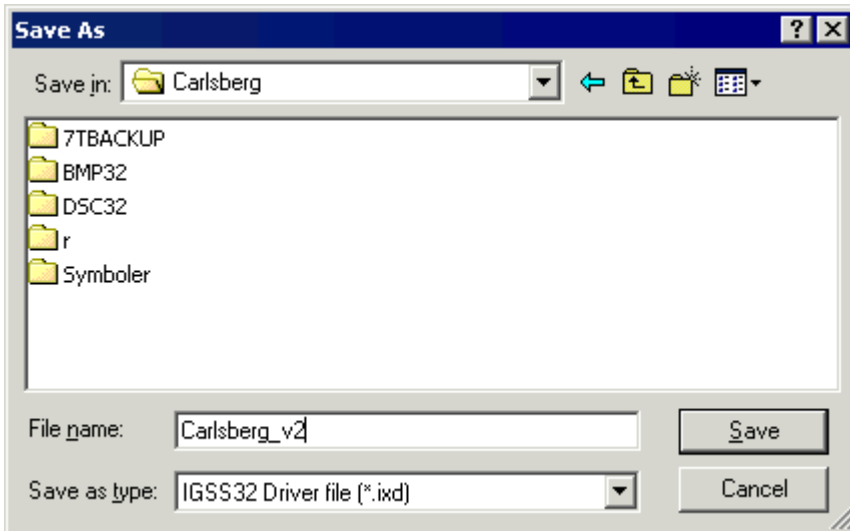
The main window of **Driver Setup** appears. Make sure that the title bar shows the path and name of the converted v2 configuration and the name of the driver profile you've just created. In this example, **Carlsberg** is the name of the active driver profile.



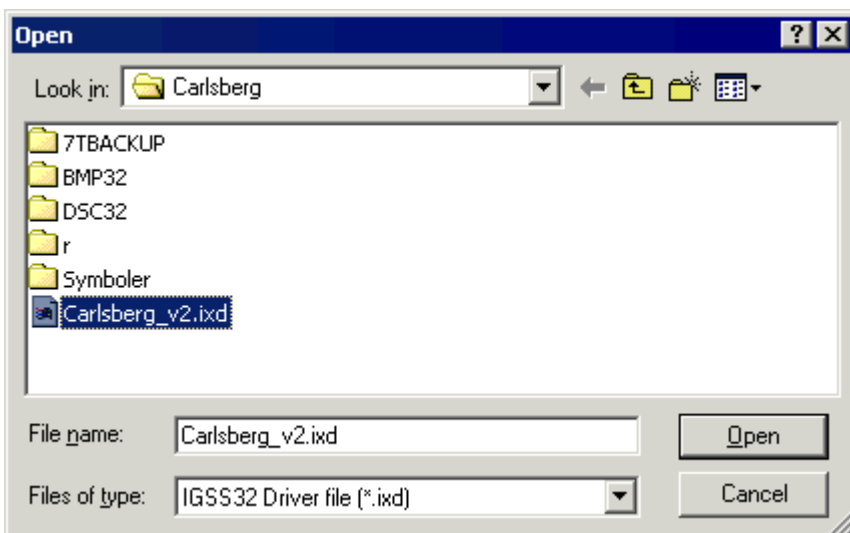
5. Select **Tools** → **Export IGSS V2 Driver Settings**. The **Save As** dialogue appears.

Driver Setup will now export the driver settings from the v2 driver profile you set active in step 1.

6. Type a descriptive name for the export file and we recommend that you save it in the root folder for the v4 configuration and click **Save**.

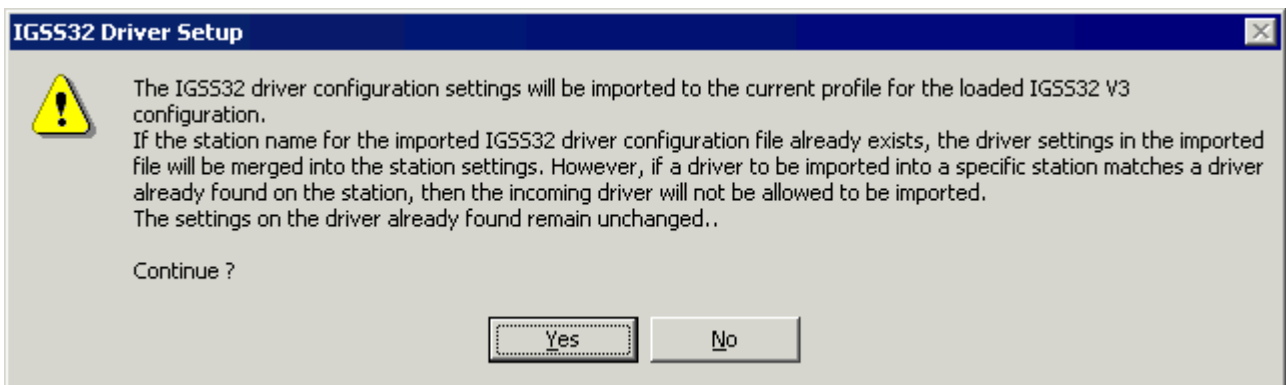


7. Select **Tools** → **Import IGSS Driver Settings**. The **Open** dialogue appears.
8. Choose the export file created in step 5 and click **Open**.



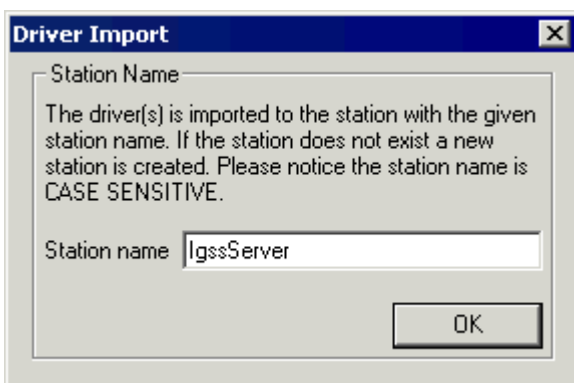
The following message appears. If you are importing the v2 settings into an empty v4 driver profile, you can ignore this message.

But if you're importing into a v4 driver profile with existing station names and drivers, please read the message carefully.

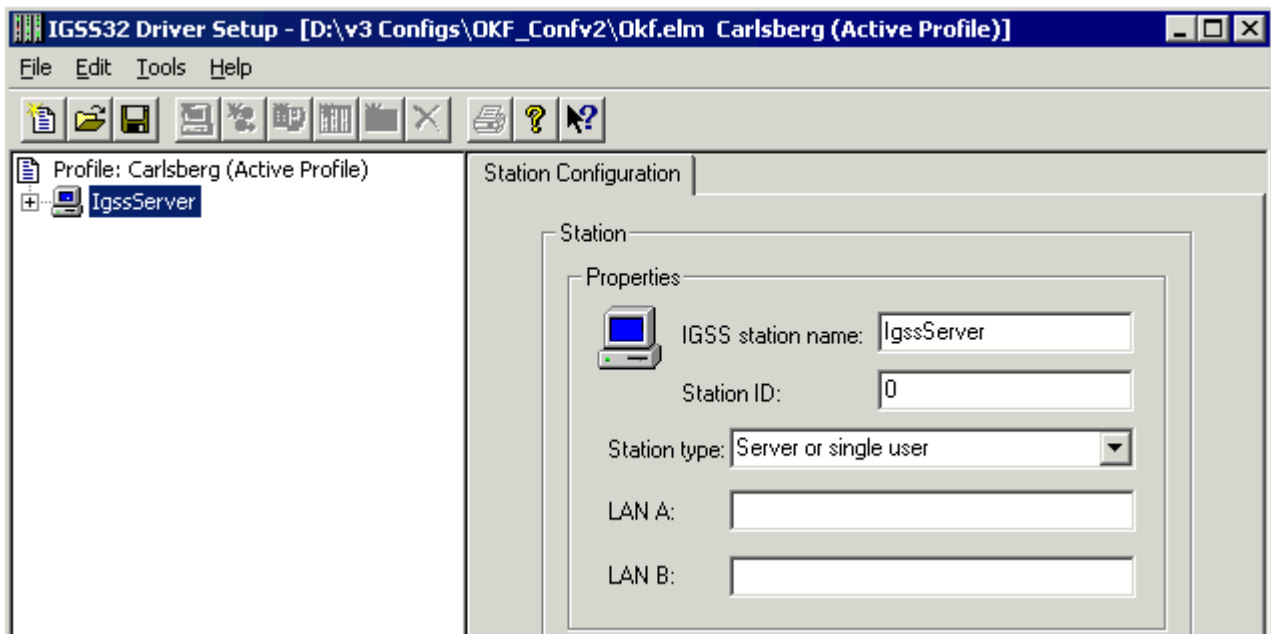


9. Click **Yes** to continue or click **No** to go back and make changes.
10. The **Driver Import** dialogue appears. Type the exact station name as you assigned to this station in the **Setup** program (**Station name** field on the **Type** tab).

Station names are case sensitive.



11. Click **OK** to continue. The driver settings are now imported into the v4 driver profile.
12. Click on the station name defined in the previous step. Under **Station type**, make sure that the correct station type is selected. For an IGSS server, select **Server or single user**.



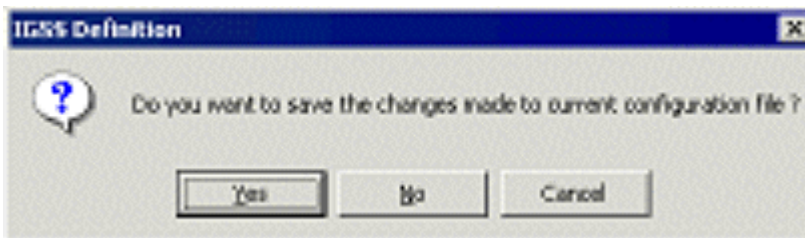
- Review the imported driver settings. If satisfactory, select **File** → **Save Profile** and exit the program.

Next >

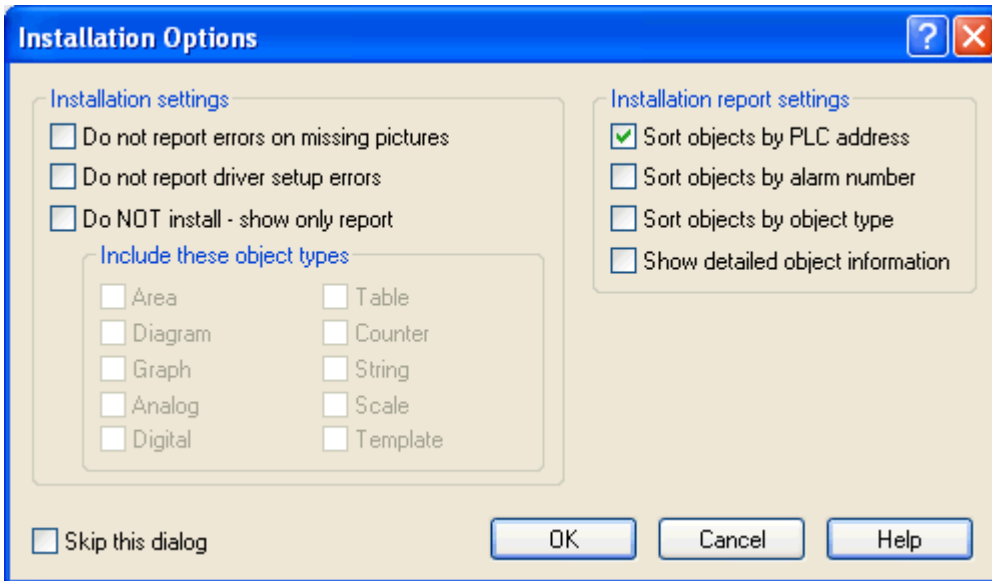
3.6 Step 5 - Install the converted configuration (Definition)

Open the **Definition** program. The converted configuration will appear, because we chose it as the active configuration in the **Setup** program.

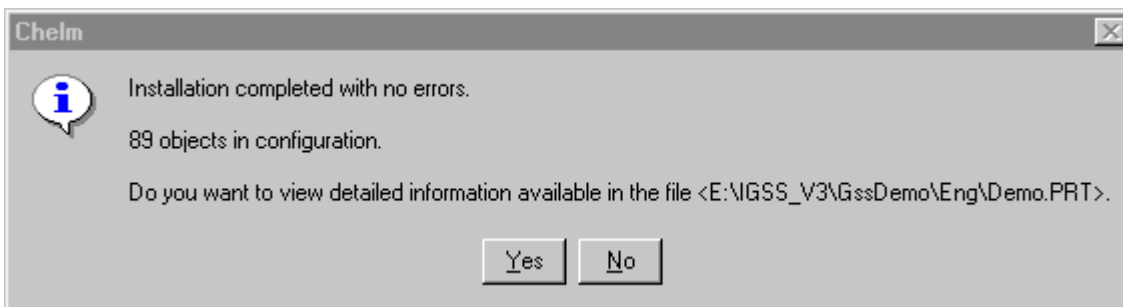
- Select **File** → **Install Configuration**. If there are unsaved changes, the following message appears. Click **Yes** to save changes.



- The **Installation Options** dialogue appears. Change the settings as required and click **OK**.



3. If the installation is successful, a message similar to the one below appears.



4. If the installation is not successful, review the error report and make the required changes to the configuration. Click the **Help** button in the **Installation Options** dialogue for further details.
5. When the installation is complete, close the **Definition** program.

Next >

3.7 Step 6 - Start the converted configuration


1. Open the **IGSS Master**.
2. Click the **Start** button in the **Home** Tab > **Data Collection** group.
3. Click the **Supervise** button to start the **Supervise** module.
4. Review the converted configuration.

The conversion procedure is now complete.

Chapter 4: Converting from IGSS16 Version 8

4.1 How to convert IGSS16 version 8.x to IGSS32 version 2

This topic describes how you convert IGSS16 v8.x configurations to the IGSS32 v2 format.

 It is recommended to back up the version 8.x configuration before converting it.

1. Open a command prompt.
2. Change the current folder to the one holding the version 8.x configuration you want to convert.
3. Type `<Installation Path>\Gss\c8to32 -d # <MyConfig>.elm`
where:
 - `<Installation Path>` is your installation path, the default is: `C:\Igss32\`
 - `<MyConfig>.elm` is the name of the version 8.x configuration.
 - `#` is the driver ID for the version 8.x configuration.

To find the driver ID of your version 8.x configuration, [click here](#).

4. Press **ENTER**.

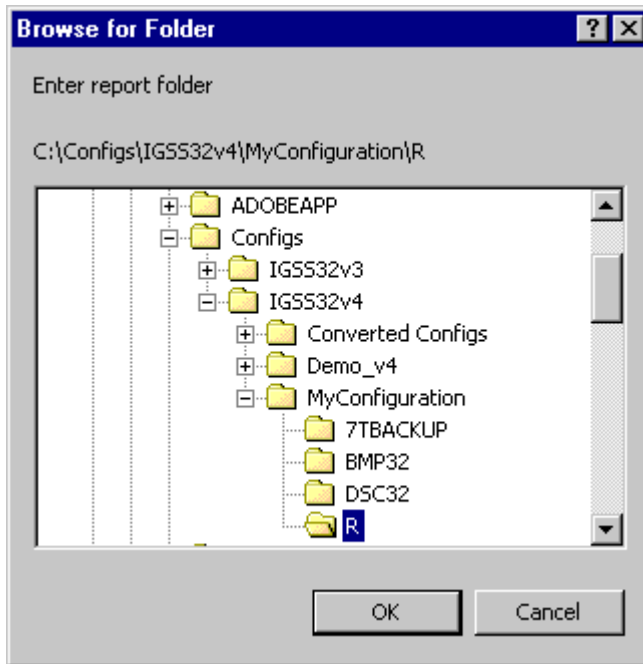
The version 8.x configuration is stored in the configuration root folder as `<config. name>.el8` and `<config. name>.dsr`. The new configuration is stored in the configuration root folder as `<config. name>.elm` and `<config. name>.dsc`.

Activate and install the configuration

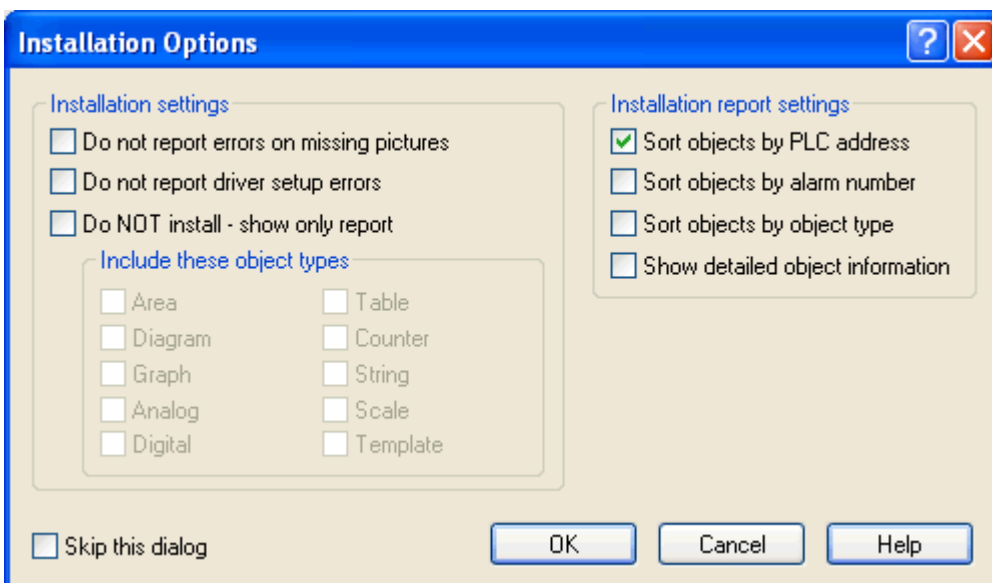
1. Open the **Setup** program to activate the converted configuration.

Do the following:

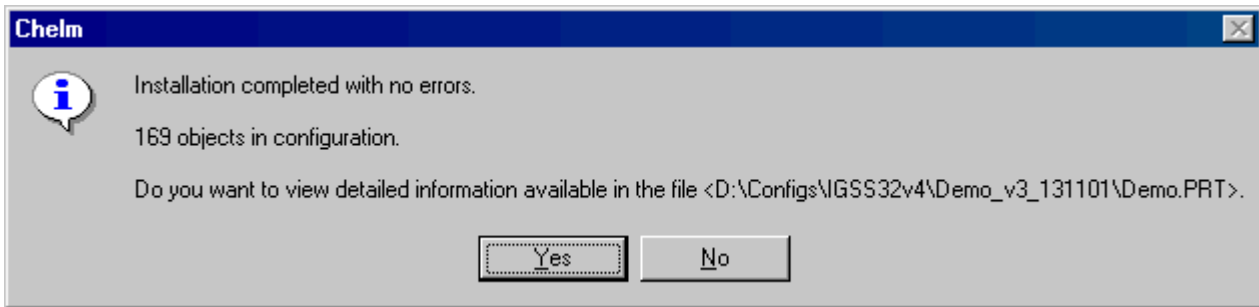
- In the **Configuration file** field, type the path to the converted configuration, **<MyConfig>.elm**.
- In the **Report folder** field, type the path to the configuration's **report folder**. If you want to imitate the IGSS default for new configurations, the report folder is a subfolder to the configuration root folder and its name is **<MyConfig>.R**.



2. Open the configuration in the **Definition** program.
3. In the **File** menu, select **Install Configuration**. The **Installation Options** dialogue appears.



4. Click **OK**. If the installation is successful, the message below appears. If errors exist in the configuration, the <MyConfig>.err file appears specifying the exact errors in the configuration. In the latter case, go back to the configuration and correct the errors.



5. Click **No** to the message.
6. Open the **IGSS Starter** program. Dependent on your settings on the **Data Collection** tab in the **System Configuration** program, do the following:
 - **Manual** - Click **Start IGSS** and then click **Supervise**.
 - **Auto**- Click the **Supervise** button.
 - **Supervise**- The configuration is automatically launched in the **Supervise** program.

7. Review the converted configuration.

Once you have converted your version 8.x configuration, you can also convert the old base class files (*.bcl), report format files (*.txt) and maintenance jobs (<config.name>.mnt).

4.2 How to convert version 8.x report format files

This topic describes how you convert IGSS 8.x report formats into the IGSS v2.0 format.

The configuration itself must be converted using the **C8to32** program, before you can convert report format files.


1. Make sure that the relevant **report folder** for the converted configuration is defined on the **Folders** tab in the **Setup** program.
2. Open a command prompt.
3. Change the current folder to the one holding the report format files. This is typically the **\R** sub-folder of the configuration root folder.
4. Type <InstallPath>\Gss\rep8to32 <MyConfig>.elm <report format file>.txt <IGSS report format> -d and press ENTER. **Example:** <InstallPath>\Gss\rep8to32 MyPlantelm elm.txt MyReportFormat -d

Where:

- <MyConfig> - is the full path to the converted configuration.
- <reportformatfile> - is the full path and name of the version 8.x report format file, for example, **elm.txt**.
- <IGSSreportformat> - is the name of the resulting IGSS report format that you can later view and edit in the **Report Formats** program.
- -d - is an optional parameter that sets this report format as the default format.

4.3 How to convert version 8.x base class files

This topic describes how you convert IGSS 8.x base class files (.bcl) into the IGSS v2.0 format.

 The configuration itself must be converted using the **c8to32.exe** program, before you can convert base class files.


1. Make sure that the relevant **report folder** for the converted configuration is defined on the **Folders** tab in the **Setup** program.
2. Open a command prompt.
3. Change the current folder to the one holding the base class files you want to convert. This is typically the **\R** subfolder of the configuration root folder.
4. Type <InstallPath>\Gss\bcl8to32 *.bcl to convert all base class files and press **ENTER**.
The new *.bcl files are saved and the version 8.x files are saved as *.bc8.



To convert a single base class file, type bcl8to32 <filename>.bcl.

4.4 How to convert version 8.x maintenance jobs

This topic describes how you convert IGSS8.x maintenance jobs into the IGSS v2.0 format.


 The configuration itself must be converted using the **C8to32** program, before you can convert maintenance jobs.


1. Make sure that the relevant **report folder** for the converted configuration is defined on the **Folders** tab in the **Setup** program.
2. Open a command prompt.

3. Change the current folder to the one holding the version 8.x maintenance jobs.
4. Type `<InstallPath>\Gss\mnt8to32 <Myv4Config>.elm <Myv4ReportFolder>\` to convert the maintenance jobs to the IGSS format.

where:

- `<Myv4Config>.elm` is the full path and name of the IGSS configuration.
- `<Myv4ReportFolder>\` is the full path to the report folder of the IGSS configuration.

 If any errors occur during the conversion, diagnostic messages are written into the file, **Mnt8to32.log**, located in the configuration folder.

 The maintenance jobs included in the version 8.x file, `<MyConfig>.mnt`, are converted into entries in the maintenance database, `Mnt.db`, which is located in the report folder.



To view the full syntax for the conversion program, type `mnt8to32` without any parameters.



The version 8.x maintenance notes are not converted, because they are separate files placed in the report folder. To use these notes with the new **Maintenance** module, simply open the relevant maintenance job, click the **Note** tab, specify the filename of the note and click **Refresh from File**.


Chapter 5: Converting from Older Versions

5.1 How to convert configurations older than version 8.x

The conversion programs

For your convenience, the required conversion programs are included on the installation CD. Normally you convert configurations one version at a time with the exception of v 4.4.5 to v 6.5.0. The table below shows you which programs to use for the individual conversions.

Convert your configuration


 It is recommended to back up the old configuration before converting it.

1. Insert the installation disc in the CD drive.
2. Before running the conversion program, you must set the following environment variable: Set `lgsslng=D:\Convert\Gss\` (where D: is your CD-ROM drive)
3. Run the first required conversion. Click the program name for details. If there is no link, run the conversion program without arguments for an explanation of the parameters.

Conversion	Program
v 4.4.3 to v 4.4.5	D:\Convert\Gss\To445.exe
v 4.4.5 to v 6.5.0	D:\Convert\Gss\Fm4to6.bat
v 5.1.0 to v 6.5.0	D:\Convert\Gss\Fm5to6.bat
v 6.5.0 to v 7.x	D:\Convert\Gss\Conv6to7.exe
v 7.x to v 8.x	D:\Convert\Gss\Conv7to8.exe

4. Run any additional conversions required until the configuration is converted to v 8.x format.

5.2 How to convert from version 7 to 8


 It is recommended to back up the old configuration before converting it.

1. Insert the installation disc in the CD drive.
2. Open Windows in DOS mode.
3. Type `D:\Convert\Gss\conv7to8 <MyConfig>` for example
`D:\Convert\Gss\conv7to8 C:\v7to8\MyV8Config.elm`
4. Load the new configuration.

5. Install the configuration.
6. Start and test the configuration.

5.3 How to convert from IGSS version 6 to 7

Version 7 was the first Windows version of IGSS , so before running the conversion program, the symbol file must be converted from GEM to Windows.

 It is recommended to back up the old configuration before converting it.

1. Insert the installation disc in the CD drive.
2. Open Symbol Editor (D:\Convert\Gss\Symedit.exe) where D: is your CD-ROM drive.
3. Choose **File** → **Import GEM SYMEDIT table**.
4. Choose the version 6 symbol file (typically *.v01 or *.v02).
5. Choose **File** → **Table** → **Save As**.
6. Save the symbol table as a *.v12 file (typically Symbols.v12).
7. Open a DOS prompt under Windows and run the **Conv6to7.exe** program.
8. Once completed, load the new symbols file, typically Symbols.v12 and load the new configuration, <MyConfig>.elm.
9. Save the new configuration.
10. Open a DOS prompt and run the **Convert.bat** program with the following syntax:


```
convert <config dir> <report dir> <MyConfig> for example
```

```
convert C:\v6to7\MyConfig C:\v6to7\MyConfig\Report MyV7Config
```

 - The program converts all text files from DOS to Windows format. The program also converts maintenance jobs, IGAL scripts, Alarm Statistics files (*.ast), base class files (*.bcl), etc.
11. Save and install the configuration.
12. Start and test the configuration.


5.4 How to convert from version 4.4.5 to 6.5.0

Important notices

- Run the conversion in DOS mode. The DOS environment variables must be set. The default variables for v8 can be used without changes.

- If there is an existing v6 configuration with the same name and no target area is defined, the v6 configuration will be overwritten with the converted v4 configuration. Otherwise, it will be merged into the v6 configuration.

Procedure

 It is recommended to back up the old configuration before converting it.

1. Insert the installation disc in the CD drive.
2. Open Windows in DOS mode.
3. Run the conversion program located under D:\Convert\Gss\Fm4to6.bat (where D: is your CD-ROM drive) using the syntax below.
4. Once the conversion is complete, load the configuration in version 6.
5. Save and install the configuration.
6. Start and test the configuration.

Syntax

```
fm4to6 symext symdir4 sym4 sym6 dir4 conf4 dir6 conf6 [area [almincr]]
```

`symext` The extension of the old symbol file (for example, V02)

`symdir4` The location of the old symbol file (for example, C:\Gss)

`sym4` The name of the old symbol file (for example, Symbols)

`sym6` The name of the new symbol file (will be placed in the configuration root folder)

`dir4` The location of the old configuration (for example, C:\MyV4Config)

`conf4` The name of the old configuration (for example, MyV4Plant)

`dir6` The location of the new v6 configuration (for example, C:\MyV6Config)

`conf6` The name of the v6 configuration (for example, MyV6Plant)

`area` The name of the area where the old configuration is placed in the new configuration
(default: Global)

`almincr` All alarm numbers will be increased with 100 plus the increment specified here (default: 0).

Example

```
fm4to6 v01 c:\v4\system\gss symbol symbols c:\v4\MyV4Config MyV4Plant  
c:\v4\v6\MyV6Config MyV6Plant
```




Chapter 6: Reference and Lookup

6.1 Getting Help in IGSS

IGSS comes with a comprehensive help system designed to help both system designers and operators to get started with IGSS as quickly as possible.

Documentation overview

The IGSS documentation includes the following items:

Documentation item	Description
Getting Started	An introduction to IGSS and its most fundamental terms and features. Getting Started is intended to get you up and running as fast as possible. The manual provides a system and architecture overview followed by a number of real-life use cases you can go through before building your first real IGSS project. The manual is available in Adobe Acrobat format (.pdf).
Module help	For each module there is a help file with the same name as the module itself, for example, Def.chm for the Definition module. The help file is invoked by clicking the  in the upper right corner of the module. The Table of Contents will then allow you to browse through the topics.
Form and Dialog help	For each Form or dialog there is a help topic with the following standard information: <ul style="list-style-type: none"> • Overview • Preconditions • Where do I find it? • Field help Form help is invoked by clicking the help button  in the upper right hand corner of the dialog box or located in the Table of Contents of the individual help file.
Thematic help	IGSS also provides thematic help. When there is a special theme that requires special attention from the user, a dedicated help file is provided. Examples include "Driver-Specific Help" and "Database Administration Help".

Where are the help files located?

The IGSS help files are located in the appropriate language folder in the installation path of IGSS, by default C:\Program Files\Schneider Electric\IGSS32\V13.0. The help files are available in English at release time.

The paths to the help files are:

Language	Path
English	[IGSS InstallPath]\ENG
Danish	[IGSS InstallPath]\DAN
German	[IGSS InstallPath]\DEU

Translated help files




Selected help files have been translated into Danish. If you require help files in your language, please contact Schneider Electric.

Help updates


The help files are continuously updated and improved. Check regularly with the IGSS Update in the IGSS Master.

6.2 Conventions in this Manual

The following typographical conventions are used:

Convention	Description	Example
User interface element	When referring to labels and names in the user interface.	The Data Management tab.
User input	When the user has to type specific data in IGSS	Type the following description: Incoming flow in Tank 2
Module name	When referring to a module in IGSS	Open the Definition module.
Note	A note emphasizes or supplements important points of the main text. A note provides information that may apply only in special cases.	 By default, the timestamp is in universal time format, UTC ¹ . This can be changed in the Driver Log Filters dialog box.
Tip	A tip suggests alternative methods that may not be obvious in the user interface. A tip also helps the user in working more effectively with IGSS. A tip is not essential to the basic understanding of the text.	 Alternative to this simple find function, you can also filter on text in the messages in Driver Log Filters dialog box.
Warning	A warning is an important note that is essential for the completion of a	 If you disregard the System

¹Universal Time Coordinated (formerly Greenwich Mean Time), used as the basis for calculating time in most parts of the world. IGSS uses this time format internally in the database. You can switch between UTC and local time by enabling or disabling the "UTC" field in various dialog boxes in the system.

Convention	Description	Example
	task. In some cases, disregarding a warning may result in undesirable functionality or loss of data.	 alarm, you may risk loss of data in the LOG and BCL files.

6.3 Version Information (IGSS Help System)

© Schneider Electric, IGSS Version 13.0

The IGSS help files are based on software build number 10305 (initial release)

English help files

To update the help files, click the **Update IGSS Software** button on the **Information and Support** tab in the **IGSS Master**. There must be a connection from the PC to the Internet. Every time **IGSS Update** is run, IGSS help files as well as IGSS system files will automatically be updated on the PC from the web server at Schneider Electric.

You select the languages you want to update in the **Tools** menu of the **IGSS Update** form.

If you are not able to update the IGSS system directly via the Internet, the alternative is to download the updates from the Schneider Electric website as zip files. These can then be transferred onto a CD or USB memory stick, which is then the medium used to update on site.

After updating your IGSS installation, the build numbers in various IGSS modules may change to a higher number. This signifies that the module in question has been updated with newer files. Build numbers consist of four digits, where the first digit represents the year and the last three represent the day number in the year in question. The build number can be seen in the **About** dialog box which can be activated from the **Help** menu.

An example:

Build number = 10305

18 = the year 2018

305 = The 305th day of the year

Chapter 7: Glossary

A

Application menu

The Application menu is the first ribbon in the IGSS Master module. Click the icon to drop down the menu. The menu contains items that were typically found in the File menu in previous versions of IGSS. In most modules, an "Options" item allows the user to define global module settings. The Application menu was introduced in the Microsoft Office 2010 package. It replaces the Application button (nicknamed Doughnut) which was introduced in IGSS V7 and V8.

D

descriptor

A descriptor is the graphical display of an object. IGSS includes many types of descriptors including: - Built-in standard symbols - Animated symbols (Symbol Factory library) - Graphics and animation - Drawing symbols - Windows controls - ActiveX controls An IGSS object can be represented with different descriptors on different diagrams.

R

Ribbon

The Ribbon is a new term/element in the Microsoft universe. The Ribbon replaces the well-known toolbars in applications. The Ribbon provides quick access to the most commonly used functions in the application. The Ribbon is divided into logical groups (the tabs) and each tab is divided into sections (the blocks in the tab). The Ribbon is context-sensitive which means that only relevant functions are accessible dependent on the current user action.

S

SCADA

Supervisory Control & Data Acquisition

U

UTC

Universal Time Coordinated (formerly Greenwich Mean Time), used as the basis for calculating time in most parts of the world. IGSS uses this time format internally in the database. You can switch between UTC and local time by enabling or disabling the "UTC" field in various dialog boxes in the system.