



Access Control User Guide

IGSS Version 10.0

The information provided in this documentation contains general descriptions and/or technical characteristics of the performance of the products contained therein. The documentation is not intended as a substitute for and is not to be used for determining suitability or reliability of these products for specific user applications. It is the duty of any such user or integrator to perform the appropriate and complete risk analysis, evaluation and testing of the products with respect to the relevant specific application of use thereof.

Neither Schneider Electric nor any of its affiliates or subsidiaries shall be responsible or liable for misuse of the information contained herein, If you have any suggestions for improvements or amendments or have found errors in this publication, please notify us.

No part of this document may be reproduced in any form or by any means, electronic or mechanical, including photocopying, without express written permission of Schneider Electric.

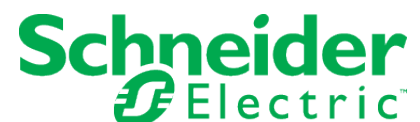
All pertinent state, regional and local safety regulations must be observed when installing and using this product. For reasons of safety and to help ensure compliance with documented system data, only the manufacturer should perform repairs to components.

Failure to use Schneider Electric software or approved software with our hardware products may result in injury, harm or improper operating results.

Failure to observe this information can result in injury or equipment damage.

©2004, 2011 Schneider Electric, All rights reserved.

This document and attachments contain confidential information and is to be treated as Commercial-in-Confidence. Copying or disclosure to a third party is prohibited without prior consent in writing from Schneider Electric.



Chapter 1: Contents

Chapter 1: Contents	3
Chapter 1: Dialog boxes	1
1.1 The Login dialog box.....	1
1.2 Temporary Login dialog.....	2
Temporary (or permanent) login.....	2
User Administration help.....	2
What's This? Help.....	3
1.3 About.....	3
Chapter 2: Reference and Lookup	5
2.1 Getting Help in IGSS.....	5
2.2 Conventions in this Manual.....	6
2.3 Version Information (IGSS Help System).....	7
Chapter 3: Glossary	8

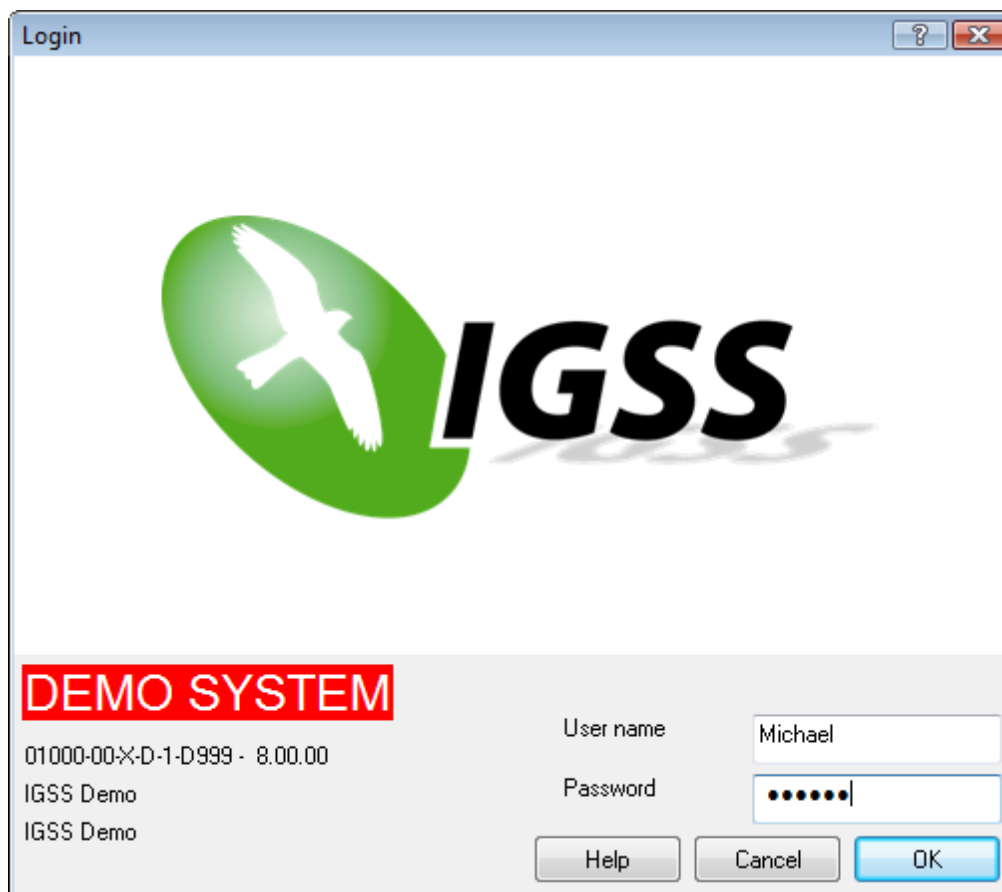
Chapter 1: Dialog boxes

1.1 The Login dialog box

Login and logout

In the **File** menu, you will find the items **Login** and **Logout**. These items are only active, when user administration has been activated in the IGSS configuration by your system administrator.

If user administration has been activated, you must log in when you start your IGSS session – and log out when you end your session. You will need your user name and password from your system administrator.



Your system administrator can configure your operator station, so that you are prompted for a user name and password as soon as you start IGSS.

Where and when is your user name registered?

When you are logged into the system, the user rights that have been set up in IGSS will define exactly what you are allowed to do. This means if you try to perform an action which you do not right to perform, the action will be prevented and a [Temporary login](#) dialog appears. Another user with the necessary user rights can now log in and perform the action.

When you perform an action in IGSS, your user name will be registered together with the action. This applies to, for example, the following actions:

- When you acknowledge an alarm
- When you start/stop a pump or a motor
- When you change a setpoint or an alarm limit
- When you start/stop **Supervise** and **Alarm**

This means that all users of the system can see who did what and when. This can be a big advantage, if you want to go back and learn from your experience with IGSS.

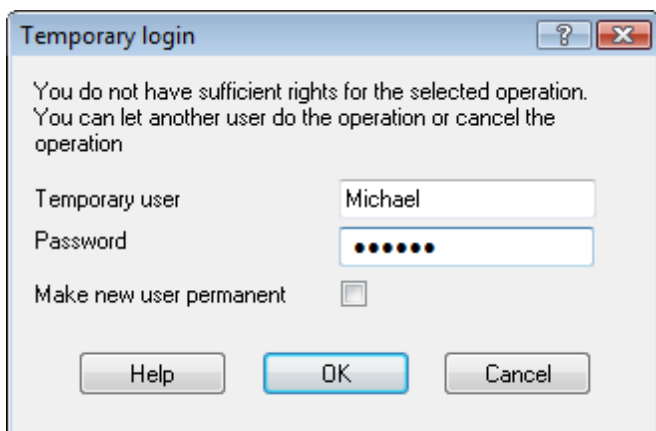
1.2 Temporary Login dialog

Temporary (or permanent) login

The **Temporary login** dialog is only displayed when User Administration functionality is enabled. When you have set up user groups and users, IGSS will examine whether the current user is allowed to do a specific operation.

If no user is logged in or if the current user is not allowed to do the operation, this dialog box appears. It allows another user with sufficient user rights to log in and do the operation.

By default, the other user will just perform this one operation and IGSS will log the user out again. However, by selecting the **Make new user permanent** check box, the other user can be logged in permanently after the operation is carried out.



User Administration help

For further information about setting up user accounts, refer to the User Administration help file.

What's This? Help

For further details about the individual items in the dialog box, click the **?** in the upper right hand corner, then click the item.

1.3 About

The **About** form shows the key information about the IGSS version you've installed.

It also displays the information contained in the IGSS license file, **Options.txt**. This file resides in the Gss subfolder of IGSS installation folder. The default installation folder is C:\Program Files\Schneider Electric\IGSS32\V10.0.

The following information is displayed in the **About** form:

Information displayed	Example
Serial no. followed by version no.	01000-00-X-D-1-0244 - 9.00.00 Where: <ul style="list-style-type: none"> • 01000 - is the number of objects purchased • 00 - is the number of operator stations • X - denotes the Extended version (now included in the Standard version) • D - denotes the sales system type. D means Development type • 1 - means that the system can run with one simultaneous drivers • D999 - is the customer's identification number <p>For further details about serial numbers and order numbers, please contact your System Integrator or 7-Technologies A/S.</p>
Name of System Integrator	Smart Engineering Inc.
Name of end-user	PureWater Plant
3 rd party copyright notices	Portions of this product were created using: LEADTOOLS @1991-1997 LEAD Technologies, Inc.
IGSS version and build number	IGSS 9- 10153 Where: <ul style="list-style-type: none"> • 9 is the main IGSSversion number

	10153 is the build number <ul style="list-style-type: none">• 10 denotes year 2010, 153 denotes the 153th day of the year
Copyright notice	© Copyright 1989-2012, 7-Technologies A/S
E-mail and fax address	E-mail: sales@7t.dk Fax: +45 45 900 701
Phone number	Phone +45 45 900 700
Number of objects – objects used	Objects: 1015 Used: 937 937 out of the purchased 1015 objects are used in the current configuration.
Drivers and operator stations purchased	Drivers: 1 Clients: 0



Chapter 2: Reference and Lookup

2.1 Getting Help in IGSS

IGSS comes with a comprehensive help system designed to help both system designers and operators to get started with IGSS as quickly as possible.

Documentation overview

The IGSS documentation includes the following items:

Documentation item	Description
Getting Started	An introduction to IGSS and its most fundamental terms and features. Getting Started is intended to get you up and running as fast as possible. The manual provides a system and architecture overview followed by a number of real-life use cases you can go through before building your first real IGSS project. The manual is available in Adobe Acrobat format (.pdf).
Module help	For each module there is a help file with the same name as the module itself, for example, Def.chm for the Definition module. The help file is invoked by clicking the  in the upper right corner of the module. The Table of Contents will then allow you to browse through the topics.
Form and Dialog help	For each Form or dialog there is a help topic with the following standard information: <ul style="list-style-type: none"> • Overview • Preconditions • Where do I find it? • Field help Form help is invoked by clicking the help button  in the upper right hand corner of the dialog box or located in the Table of Contents of the individual help file.
Thematic help	IGSS also provides thematic help. When there is a special theme that requires special attention from the user, a dedicated help file is provided. Examples include "Driver-Specific Help" and "Database Administration Help".

Where are the help files located?

The IGSS help files are located in the appropriate language folder in the installation path of IGSS, by default C:\Program Files\Schneider Electric\IGSS32\V10.0. The help files are available in English at release time.

The paths to the help files are:

Language	Path
English	[IGSS InstallPath]\ENG
Danish	[IGSS InstallPath]\DAN
German	[IGSS InstallPath]\DEU

Translated help files

Selected help files have been translated into Danish and German. If you require help files in your language, please contact 7-Technologies A/S.

Help updates

The help files are continuously updated and improved. Check regularly with the IGSS Update in the IGSS Master.

2.2 Conventions in this Manual

The following typographical conventions are used:

Convention	Description	Example
User interface element	When referring to labels and names in the user interface.	The Data Management tab.
User input	When the user has to type specific data in IGSS	Type the following description: Incoming flow in Tank 2
Module name	When referring to a module in IGSS	Open the Definition module.
Note	A note emphasizes or supplements important points of the main text. A note provides information that may apply only in special cases.	By default, the timestamp is in universal time format, UTC ¹ . This can be changed in the Driver Log Filters dialog box.
Tip	A tip suggests alternative methods that may not be obvious in the user interface. A tip also helps the user in working more effectively with IGSS. A tip is not essential to the basic understanding of the text.	Alternative to this simple find function, you can also filter on text in the messages in Driver Log Filters dialog box.
Warning	A warning is an important note that is essential for the completion of a	If you disregard the System alarm, you may risk loss of

¹Universal Time Coordinated (formerly Greenwich Mean Time), used as the basis for calculating time in most parts of the world. IGSS uses this time format internally in the database. You can switch between UTC and local time by enabling or disabling the "UTC" field in various dialog boxes in the system.

Convention	Description	Example
	task. In some cases, disregarding a warning may result in undesirable functionality or loss of data.	data in the LOG and BCL files.

2.3 Version Information (IGSS Help System)

© 7-Technologies A/S, IGSS Version 10.0

The IGSS help files are based on software build number 10305 (initial release)

English help files

To update the help files, click the **Update IGSS Software** button on the **Information and Support** tab in the **IGSS Master**. There must be a connection from the PC to the Internet. Every time **IGSS Update** is run, IGSS help files as well as IGSS system files will automatically be updated on the PC from the web server at 7-Technologies A/S.

You select the languages you want to update in the **Tools** menu of the **IGSS Update** form.

If you are not able to update the IGSS system directly via the Internet, the alternative is to download the updates from the 7-Technologies A/S website as zip files. These can then be transferred onto a CD or USB memory stick, which is then the medium used to update on site.

After updating your IGSS installation, the build numbers in various IGSS modules may change to a higher number. This signifies that the module in question has been updated with newer files. Build numbers consist of four digits, where the first digit represents the year and the last three represent the day number in the year in question. The build number can be seen in the **About** dialog box which can be activated from the **Help** menu.

An example:

Build number = 10305

12 = the year 2012

305 = The 305th day of the year

Chapter 3: Glossary

A

Application menu

The Application menu is the first ribbon in the IGSS Master module. Click the icon to drop down the menu. The menu contains items that were typically found in the File menu in previous versions of IGSS. In most modules, an "Options" item allows the user to define global module settings. The Application menu was introduced in the Microsoft Office 2010 package. It replaces the Application button (nicknamed Doughnut) which was introduced in IGSS V7 and V8.

D

descriptor

A descriptor is the graphical display of an object. IGSS includes many types of descriptors including: - Built-in standard symbols - Animated symbols (Symbol Factory library) - Graphics and animation - Drawing symbols - Windows controls - ActiveX controls An IGSS object can be represented with different descriptors on different diagrams.

Q

Quick Access Bar

You can customize the Quick Access Bar to include the functions you use most frequently. Simply drag the relevant function from the ribbon to the Quick Access Bar.

R

Ribbon

The Ribbon is a new term/element in the Microsoft universe. The Ribbon replaces the well-known toolbars in applications. The Ribbon provides quick access to the most commonly used functions in the application. The Ribbon is divided into logical groups (the tabs) and each tab is divided into sections (the blocks in the tab). The Ribbon is context-sensitive which means that only relevant functions are accessible dependent on the current user action.

S

SCADA

Supervisory Control & Data Acquisition

U

UTC

Universal Time Coordinated (formerly Greenwich Mean Time), used as the basis for calculating time in most parts of the world. IGSS uses this time format internally in the database. You can switch between UTC and local time by enabling or disabling the "UTC" field in various dialog boxes in the system.